



*Ken J. Mascara
Sheriff of St. Lucie County*

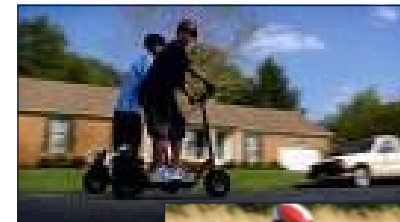
With the search to find more economical and environmentally friendly means of transportation, many are turning to bicycles, mopeds, scooters, and motorcycles. With these options, there are also differences in the legal requirements when operating these vehicles on the roadways and sidewalks. The information in this pamphlet will discuss the basic needs and requirements for the operation of these vehicles.

The Sheriff's office would also like to remind you that although on some vehicles you are not required to wear helmets and eyewear, we do encourage its use for your safety. We also recommend shoes or boots that cover the tops of the ankles, light colored long sleeve shirts or jackets for extra visibility, and long pants for coverage. Remember, even though we all must share the road, you still need to drive defensively. Be observant using all of your senses, tools, and obey all the laws.

Ride Safe!

- 316.130 Pedestrians; traffic regulations
- 316.1995 Driving upon sidewalk or bicycle path
- 316.2065 Bicycle regulations
- 316.2068 Electric personal assistive mobility devices; regulations
- 316.208 Motorcycles and mopeds
- 316.2085 Riding on motorcycles or mopeds
- 316.209 Operating motorcycles on roadways laned for traffic
- 316.2095 Footrests, handholds, and handlebars
- 316.210 Equipment for motorcycle and moped riders
- 316.2128 Operation of motorized scooters and miniature motorcycles; requirements for sales
- 316.405 Motorcycle headlights to be turned on
- 316.425 Lamps on parked motorcycles
- 316.445 Performance ability of motorcycle brakes

BASIC REQUIREMENTS BICYCLES TO MOTORCYCLES



Sheriff Ken J. Mascara
St. Lucie Co. Sheriff's Office
4700 West Midway Road
Fort Pierce, Florida 34981
(772) 462-3296
www.stluciesheriff.com

Type	Driver's License	Registration	Roadway	Sidewalk	Helmet	Eye Wear
Bicycle Pedal Power	No	No	Yes Must obey motor vehicle laws	Yes Bicycle laws apply FSS 316.2065(10)	Under 16 years FSS 316.2065(d)	No
Bicycle Electric Motor Under 20mph	No Must be 16 or older	No	Yes Must obey motor vehicle laws	Yes Bicycle laws apply FSS 316.2065(10)	See Driver's License Box	No
Bicycle Gas Motor 50cc or Less	Yes — Class E same as moped No M/C endorse	Yes* same as moped	Yes Must obey motor vehicle laws	Pedal power only Bicycle laws apply FSS 316.2065	No (Passengers under 16 — yes)	No
Go-Ped Gas or Electric	Yes Class E	No*	No*	Foot power only	No	No
Mini Cycle	Yes Class E	No*	No* FSS 316.2128(1)	No	No	No
Scooter Less than 50cc 30 mph or Less	Yes Class E	Yes*	Yes* FSS 316.2128(1)	No	No	No
Moped Gas or Electric Less than 50cc, 2bhmp or less 30mph or less	Yes Class E	Yes	Yes	Yes Pedal power only FSS 316.208(3)or (4)	No (Passengers under 16 — yes)	No
Motorcycles and Scooters 50cc and Up	Yes Need motorcycle endorsement	Yes	Yes	No	Yes with an Exception see FSS 316.211(3)(b)	Yes

*According to Florida law, go-peds, mini cycles, and electric (e)-scooters are considered motor vehicles. However, because go-peds, mini-cycles, and e-scooters are not manufactured to meet the required Federal Motor Vehicle Safety Act, they **cannot** be registered for operation on public roadways, even if the operator has a valid driver's license. Unregulated vehicles may be operated on private property only. FSS can be viewed at <http://www.leg.state.fl.us/statutes>.